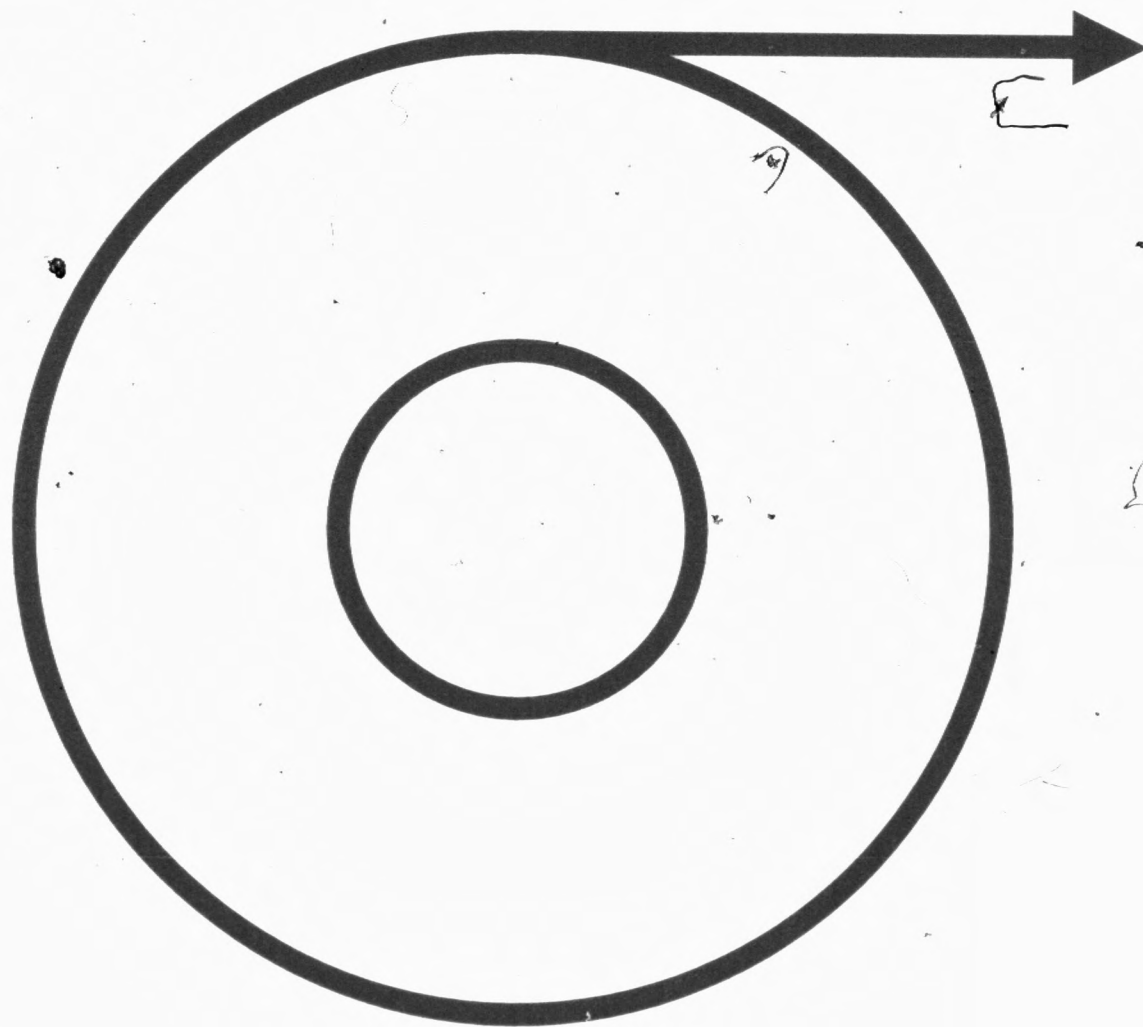


# THE NATIONAL ARCHIVES



START OF REEL

ABCDEFGHIJKLMN OPQRSTUVWXYZ  
abcdefghijklmnopqrstu vwxyz  
1234567890

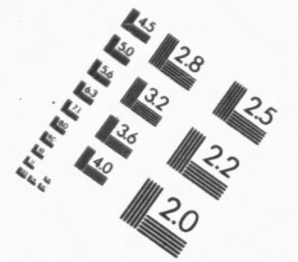
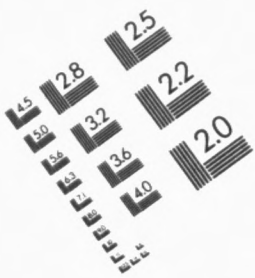
2.5 mm

ABCDEFGHIJKLMN OPQRSTUVWXYZ  
abcdefghijklmnopqrstu vwxyz1234567890

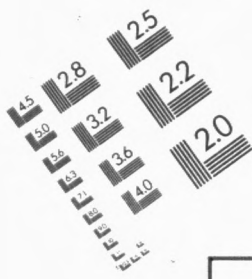
2.0 mm

ABCDEFGHIJKLMN OPQRSTUVWXYZ  
abcdefghijklmnopqrstu vwxyz1234567890

1.5 mm



### PM-MGP METRIC GENERAL PURPOSE TARGET PHOTOGRAPHIC



Resolution patterns with values: 1.0, 1.1, 1.25, 1.4, 1.6, 1.8, 2.0, 2.2, 2.5, 2.8, 3.2, 3.6, 4.0, 4.5, 5.0, 5.6, 6.3, 7.1, 8.0, 9.0, 10.0

Vertical dimensions: 200 mm, 150 mm, 100 mm

Horizontal dimensions: A5, A4, A3

Resolution labels: 1.0 mm, 1.5 mm, 2.0 mm, 2.5 mm

Text: PRECISION<sup>SM</sup> RESOLUTION TARGETS

THE NATIONAL ARCHIVES  
RECORD COPYING DEPARTMENT

Vertical text on the right: ABCDEFGHIJKLMN OPQRSTUVWXYZ  
abcdefghijklmnopqrstu vwxyz  
1234567890

### PRECISION<sup>SM</sup> RESOLUTION TARGETS

THE NATIONAL ARCHIVES  
RECORD COPYING DEPARTMENT

ABCDEFGHIJKLMN OPQRSTUVWXYZ  
abcdefghijklmnopqrstu vwxyz  
1234567890

4.5 mm

ABCDEFGHIJKLMN OPQRSTUVWXYZ  
abcdefghijklmnopqrstu vwxyz1234567890

3.5 mm

ABCDEFGHIJKLMN OPQRSTUVWXYZ  
abcdefghijklmnopqrstu vwxyz1234567890

3.0 mm

