

Kutztown University

## Research Commons at Kutztown University

---

Yearbooks 1950-1959

Kutztown University Yearbooks


---

1953

### 1953 Keystoneia

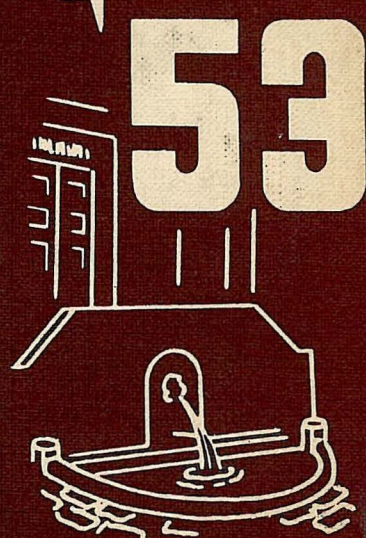
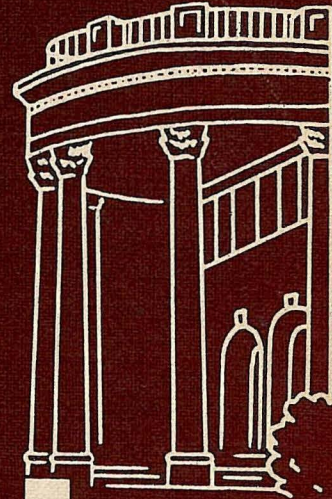
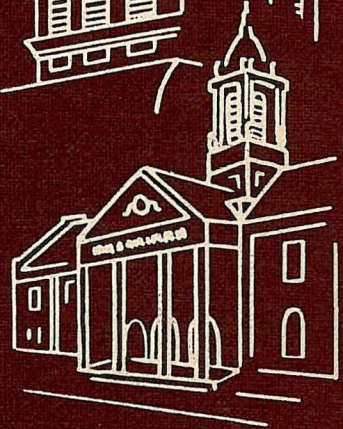
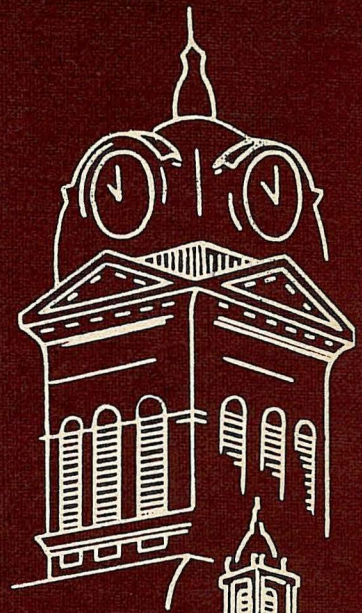
Kutztown State Teachers' College

Follow this and additional works at: [https://research.library.kutztown.edu/yearbooks\\_1950-1959](https://research.library.kutztown.edu/yearbooks_1950-1959)

 Part of the [Higher Education Commons](#), [Public History Commons](#), [Social History Commons](#), and the [United States History Commons](#)

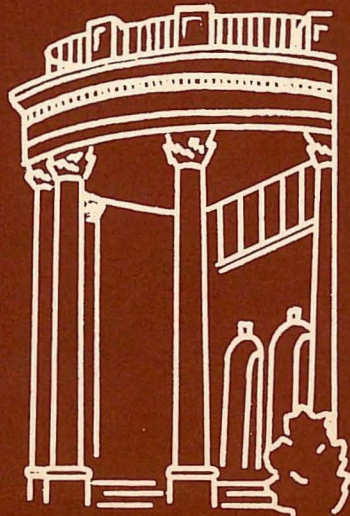
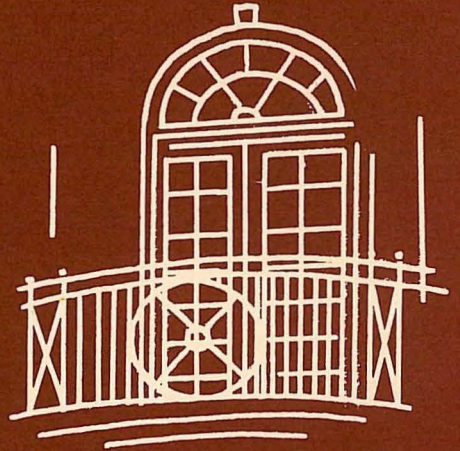
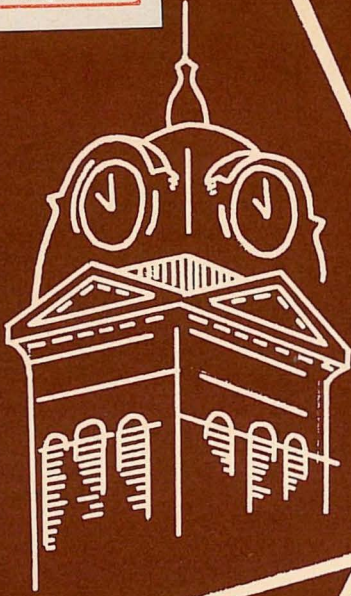
---

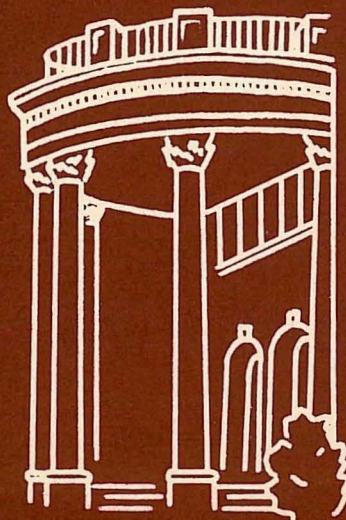
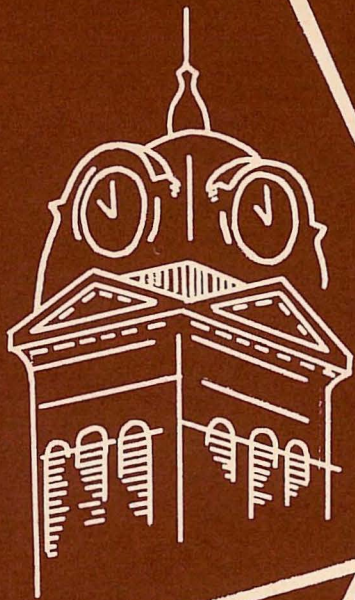
# keystonia

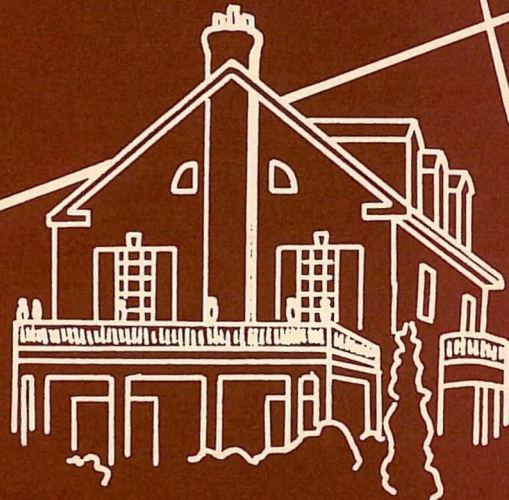
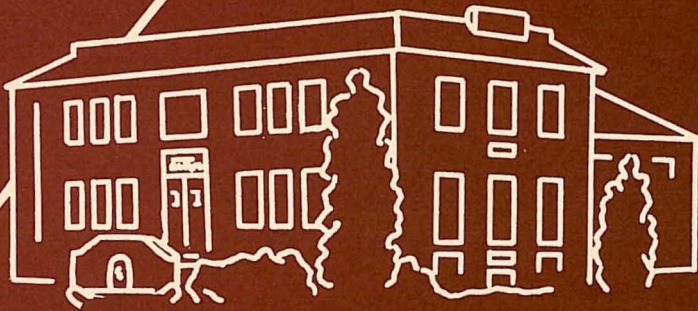
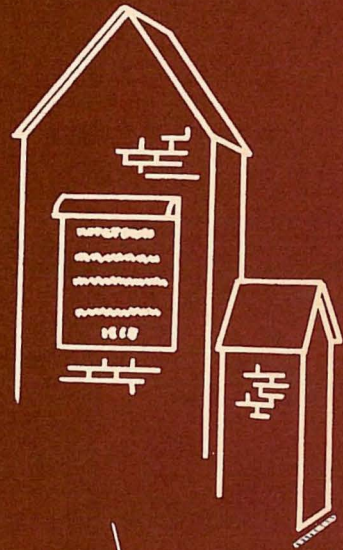
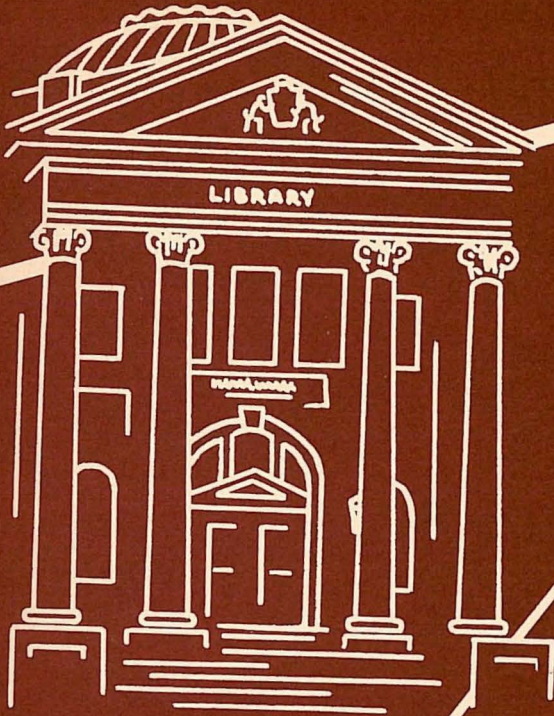


53

Miss Shirley Yost  
State Teachers Col., Box 29  
Kutztown, Pennsylvania













PUBLISHED BY  
THE STUDENTS  
STATE TEACHERS  
COLLEGE  
KUTZTOWN  
PENNSYLVANIA

---



# keystoneia





# staff

Managing Editor . . . . NANCY A. KLOPP  
Business Manager . . . . ANNA L. EBERTS  
Secretary . . . . . JEAN KURTYKA  
Art Editor . . . . . EMMA JANE SNYDER

Associates: DORIS RICHTER  
LAUDINE RAGER  
BETTY CHECK  
EDNA FREESTONE

Photography Editor . . . . GLORIA HAINES

Associates: GEORGE McFEE

Feature Editor . . . . . JANET KONHAUS

Associates: NANCY DAY  
MARGARET DOLAN  
NORMA GREEN  
ELAINE HAHN  
PAT JENKS  
MARY ANN WALP

Class Editor . . . . . ESTHER PAPOUTSIS

Associates: SHIRLEY FEICK  
HARRIET LILLY  
BARBARA NOWICKI

Sports Editor . . . . . SHIRLEY KUTZ

Associates: NANCY FRYER  
PAUL GARRISON

Advertising Editor . . AUDREY SCAGNELLI

Associates: LUCILLE RUGGIERO  
DIANE WILLIAMS

# contents

*College Views*

*Activities*

*College Capers*

*Sports*

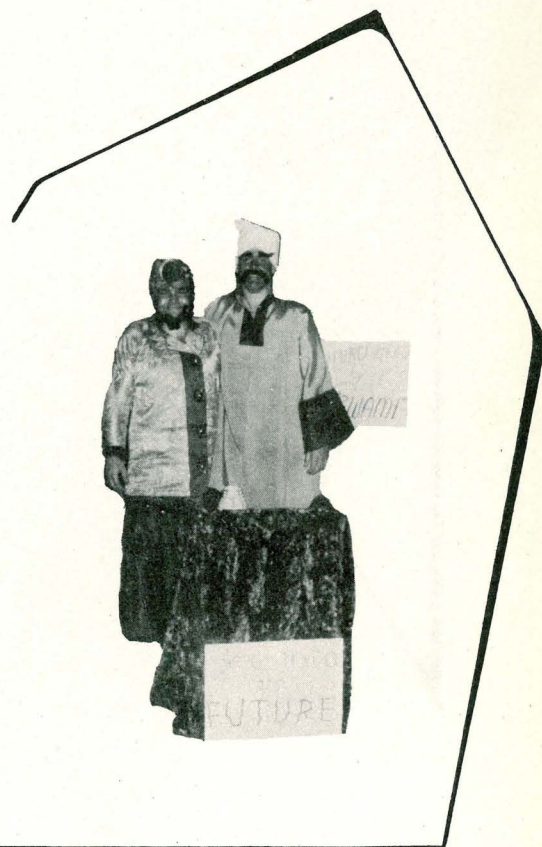
*Administration*

*Seniors*

*Classes*

*Directory*

*Advertisements*

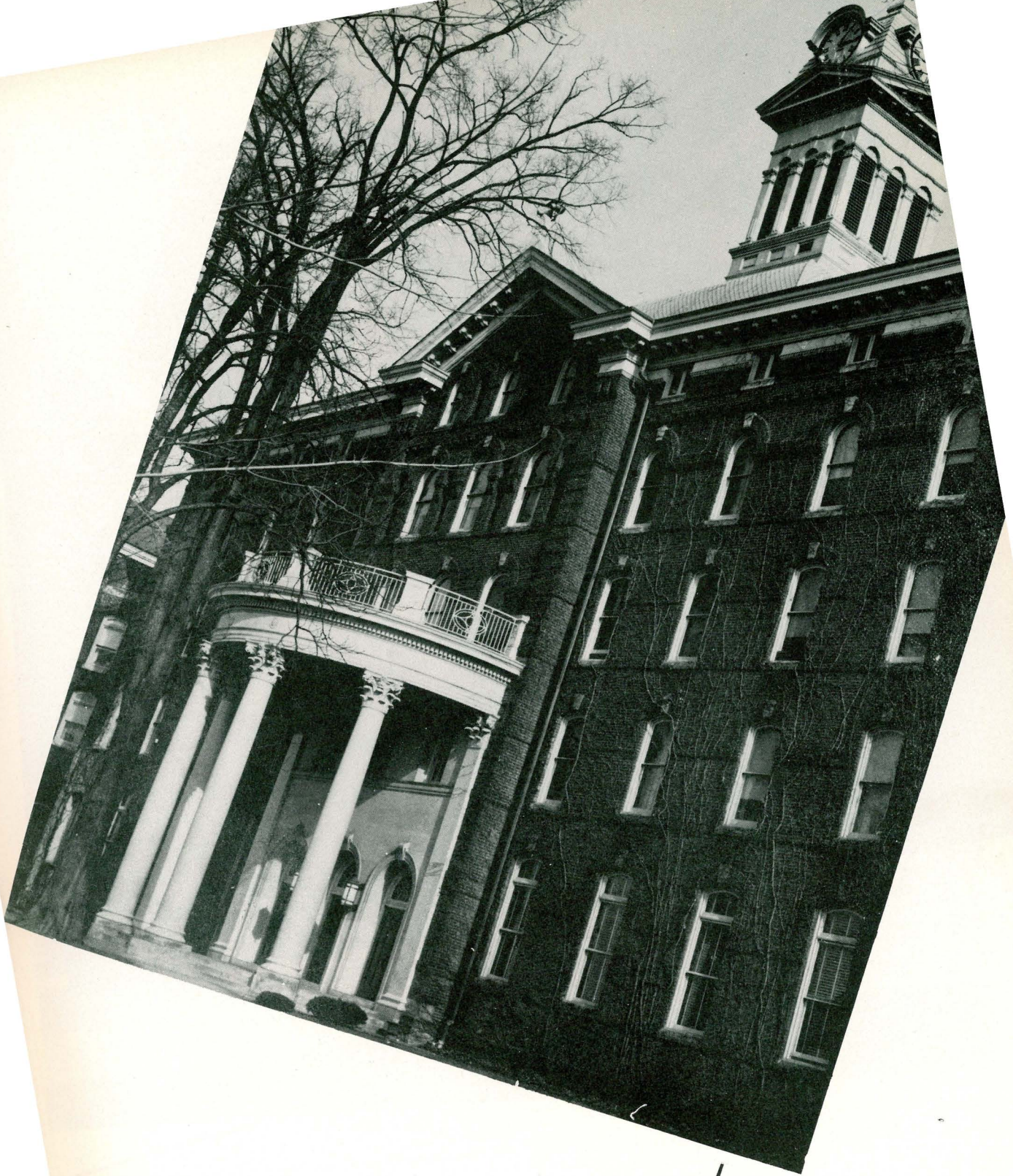




# foreword

Another year has ended . . . another class  
is leaving the halls of ivy . . . memories  
of college days linger . . . .

KEYSTONIA, a treasury of those  
memories . . . recalling happy  
days at KSTC

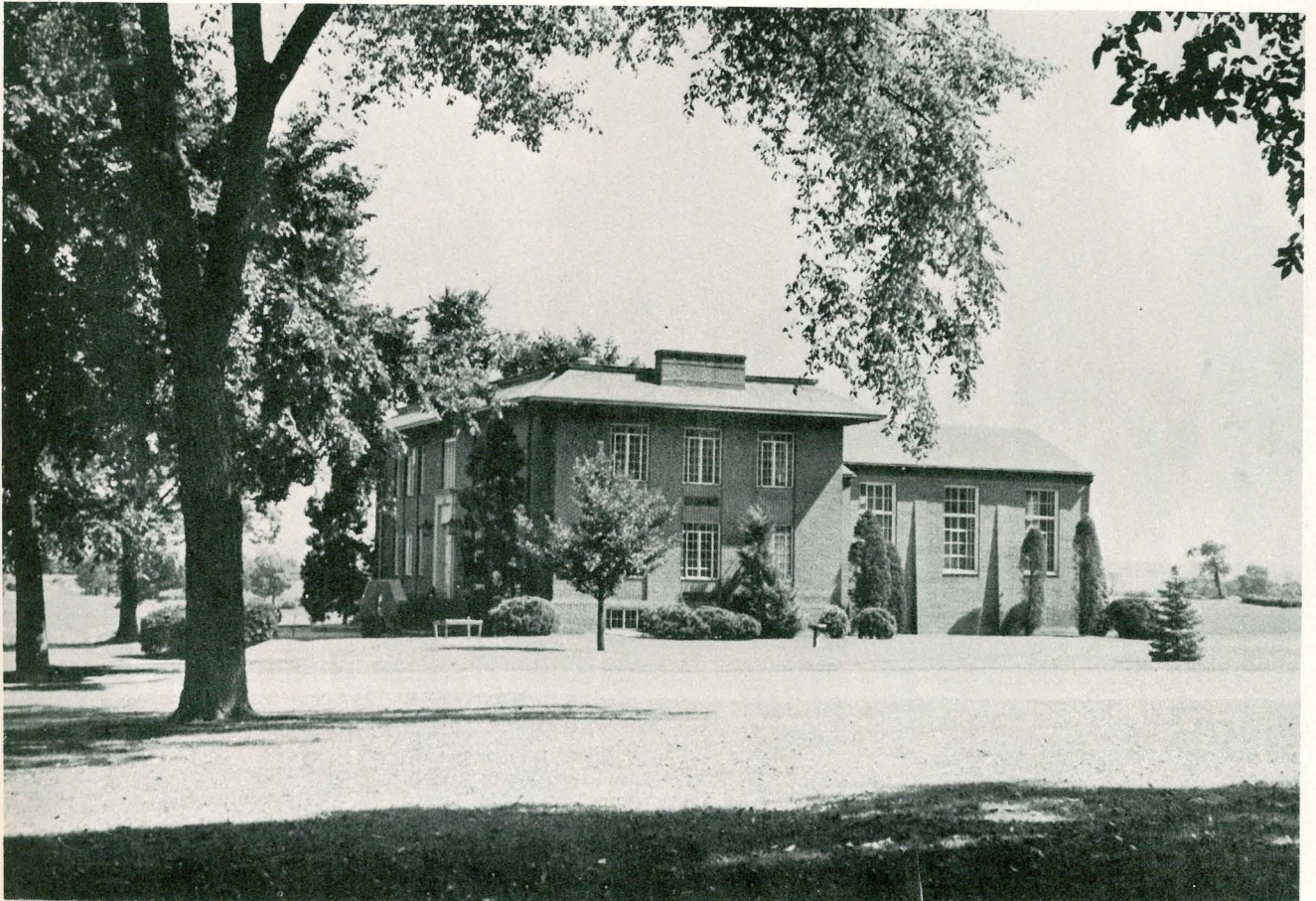


old main



---

*library*



*art studio*

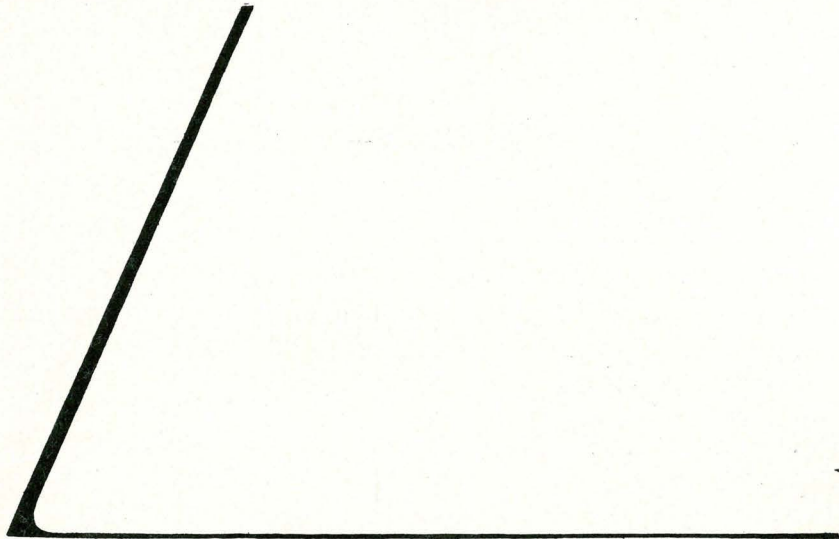


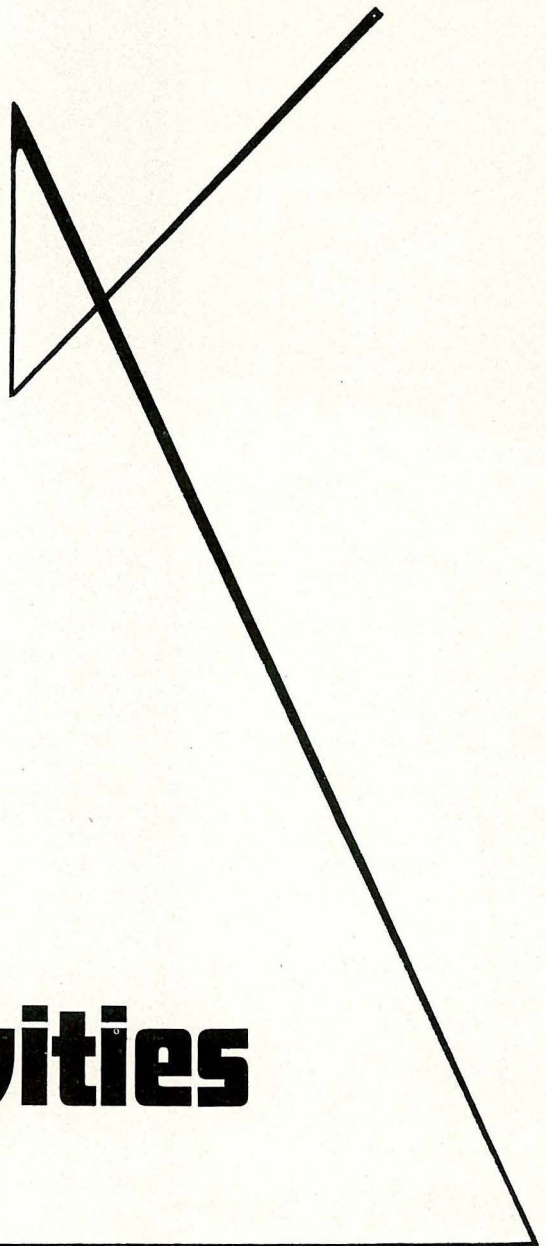
*auditorium*



*gymnasium*







**activities**



Executive board of Student Cooperative Association composed of four representatives from each class . . . sponsors Ecaterini, Greek foster child . . . work for weeks preparing budget . . . determine policies and allocate funds pertaining to extra-curricular activities—athletics, assemblies, receptions and dances, student publications . . . meetings are open to all students . . .

President . . . . .	ROSE MARIE ERICO	Advisers . . . . .	
Vice-President . . . . .	DAVID MITCHELL		MARY EDNA RICKENBACH
Secretary . . . . .	CAROLYN HORN		DR. WILLIAM LIGGITT
Treasurer . . . . .	ANTOINETTE MOSSER		

*activities board*





Branch of the national association . . . the Keystone chapter open to members of all classes . . . to expand and broaden professional interests . . . sponsored two assembly programs . . . played host to high-school students . . . striving to increase membership . . .

President . . . . .	SALLY SMOKER	Treasurer . . . . .	GLADYS NEY
Vice-President . . . . .	VIRGINIA HAYATION	Advisers . . . . .	DR. WILLIAM FINK
Secretary . . . . .	VIRGINIA TREICHLER	. . . . .	MR. GEORGE WEISS



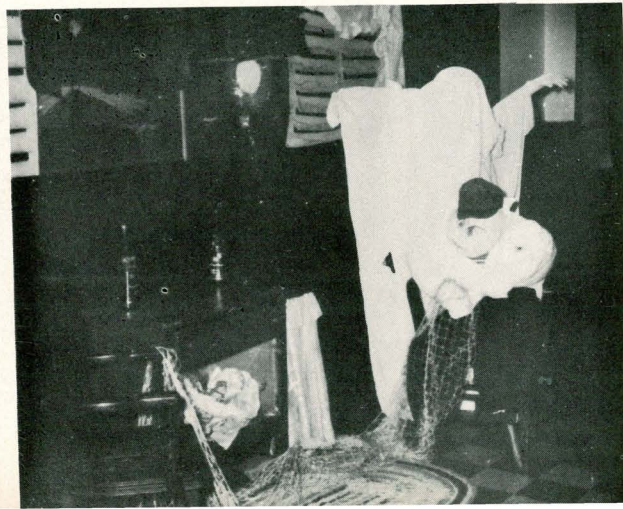
*future teachers of america*

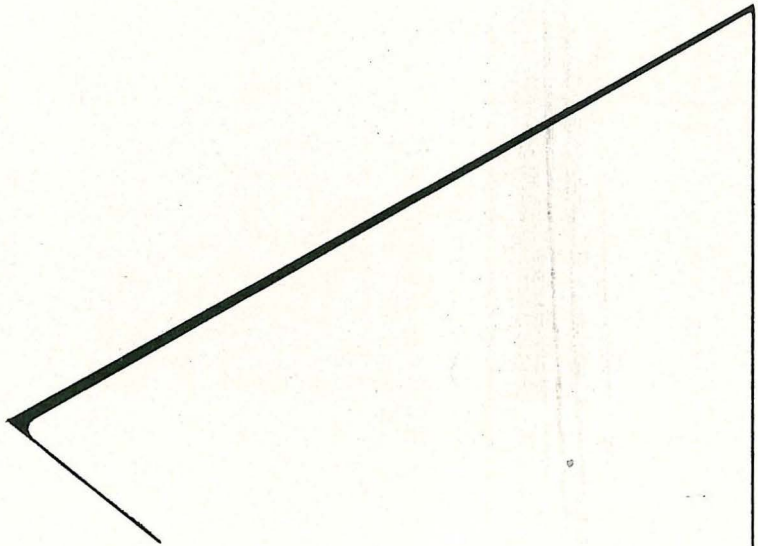


## *resident women's cooperative association*

Representative Council cooperating with the Dean of Women to establish and enforce regulations in the dormitory . . . sponsors pajama parties . . . fabulous spring fashion show . . . annual open house . . . tea in honor of the German teachers.

President .....	EMMA JANE SNYDER	Secretary .....	SHIRLEY FEICK
Vice-President .....	SALLY SMOKER	Treasurer .....	LORETTA URICH

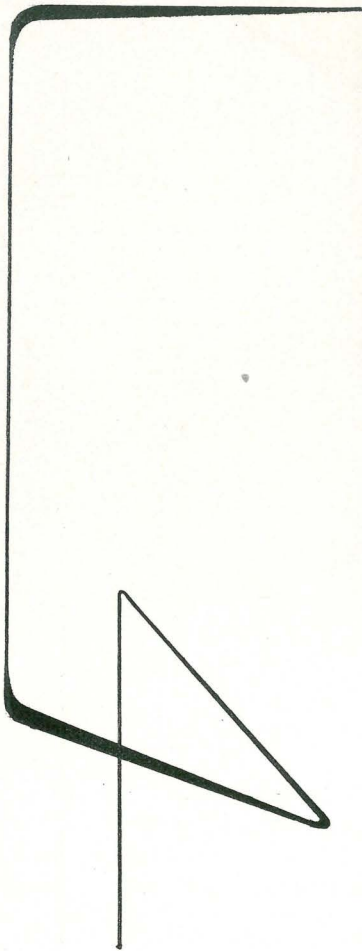




## *commuting women's league*

Open to all commuting women . . . first highlight was the big-little sister get-together party in honor of the freshmen . . . Christmas party provided food and entertainment for all . . . annual luncheon and tea . . . sponsored bazaar to sell their home-made goodies to eager residents.

President .....	JOAN MOYER	Treasurer .....	GLADYS MERKEL
Vice-President .....	JOYCE GARMAN	Adviser .....	MISS MARY E. RICKENBACH
Secretary .....	MARILYN GOOD		



Designed for welfare of resident men . . . fosters spirit of co-operation and friendliness . . . committee-of-six leads organization . . . recreational activities included Thanksgiving dance with Walt Smith as Mr. Esquire . . . Open House in dormitory . . .

Committee .....

ROBERT WHITE, Chairman  
ELMER BERGMAN  
JOSEPH BUGGY

ROBERT EGGE  
JOHN GUYESKI  
ROBERT KOSLOSKY

Adviser ..... DR. WILLIAM LIGGITT



*esquires*





*commuting men*





Open to freshmen and sophomores . . . group discussions, lectures, speakers . . . art bazaar which includes selling of articles made by members . . . art parties . . . meet in Sharadin Studio . . .

President .....	NEIL HARING	Treasurer .....	ROWENA SCHONER
Vice-President .....	ROBERT HEWITT	Adviser .....	MR. HAROLD MANTZ
Secretary .....	JOAN GREEN		

*art alliance*

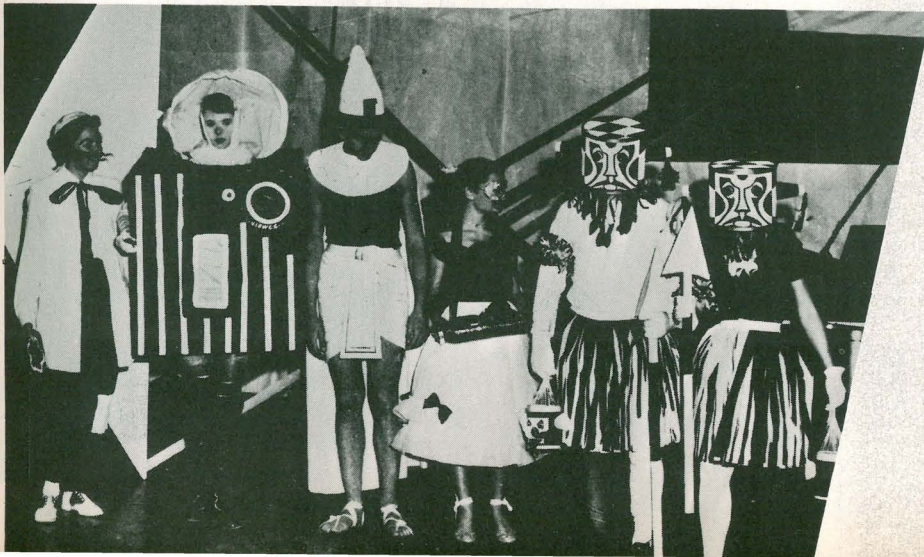




## *art education society*

Juniors and Seniors eligible for membership. Help in bridging gap between school training and professional service in art education . . . sponsored annual Beaux Arts Ball with "Black and White" theme . . . participate in N.A.E.A. and E.A.A. . . . acquire professional contacts . . . helped to plan art conference held at K.S.T.C. in November . . .

President .....	DANIEL DAGLE	Secretary .....	IRENE MITCHELL
Vice-President .....	ROBERT KOSLOSKY	Adviser .....	MR. HORACE F. HEILMAN



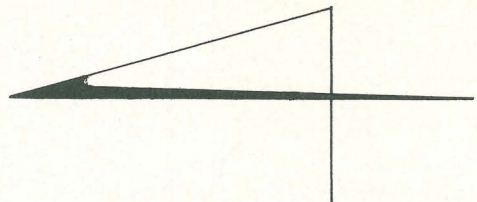
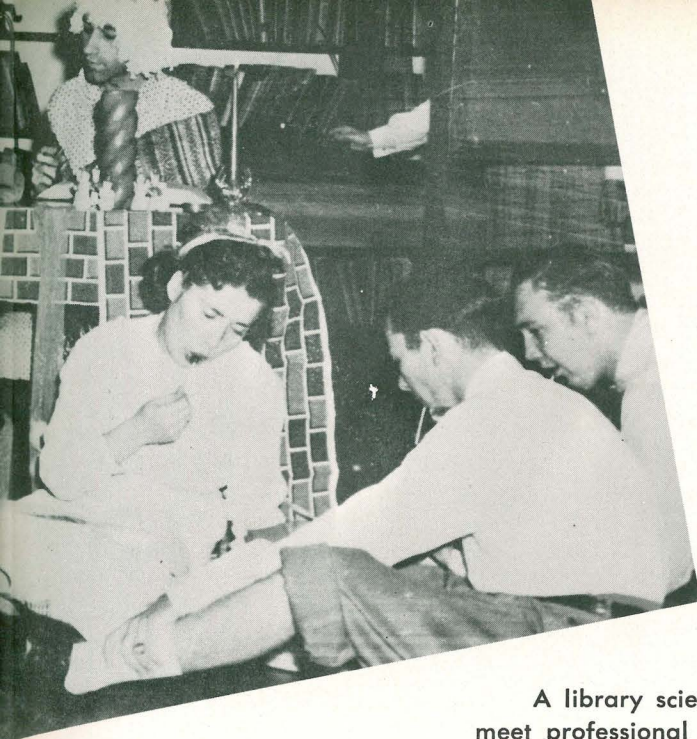


Acquaints freshmen and sophomores with library profession . . .  
 displays for bookweek . . . book representative affair . . . Hallowe'en  
 Party . . . Christmas Dinner with entertainment . . . visited Rodale Press  
 . . . closed session with spring picnic . . .

President ..... ETHEL VARGA      Treasurer ..... JEANNE ELDER  
 Vice-President ..... VIRGINIA HENNE      Adviser ..... MRS. MARY ELLEN LEWIS

*jr. library club*





## *lambda sigma*

A library science club for juniors and seniors . . . helps members meet professional problems . . . creates spirit of fine fellowship . . . Hallowe'en and Christmas Party . . . visited Philadelphia school libraries . . . spring picnic . . . attended annual Eastern Pennsylvania Library Conference . . .

President . . . . .	ROBERT WHITE	Treasurer . . . . .	MARILYN LONGANECKER
Vice-President . . . . .	FRED HARTZ	Adviser . . . . .	DR. RALPH FRITZ
Secretary . . . . .	MYRTLE LENTZ		





To develop further professional interests . . . branch of the Association for Childhood Education . . . annual Christmas party for Laboratory School children—Santa Claus, gifts, movies . . . on the agenda—combined dinner with the Secondary Education Club, review of current publications, round table discussions with recent graduates, films of professional interests . . . sponsor a tea . . . plan program for children while parents attend monthly PTA meetings . . .

President ..... MARGARET DOLAN  
Corresponding Secretary .. ANNA STEIDLE  
Recording Secretary ..... NANCY DAY

Treasurer ..... JEAN SHOEMAKER  
Adviser ..... MISS KATHERINE CHRIST

## *elementary club*





Develop greater interest in the teaching profession . . . mock interviews by a Superintendent . . . visual aid demonstrations . . . round-table discussions . . . annual banquet with the Elementary Club . . .

President .....	HELEN JACK	Treasurer .....	STEPHEN SIMON
Vice-President .....	ROBERT COLEMAN	Adviser .....	MR. HERBERT SCHLENKER
Secretary .....	PATRICIA GROFT		

*secondary club*



## *kappa delta pi*

National Honor Society in education . . . Epsilon Zeta Chapter  
twelve years old on May 27 . . . candidates eligible in junior year—in  
upper quartile of college, good character traits, ability in leadership  
. . . candlelight pledge ceremony, initiation dinner . . .

President . . . . .	DONALD MOHREY	Historian-Reporter . . . . .	ANNA EBERTS
Vice-President . . . . .	ELEANOR A. GARLAND	Counselors . . . . .	MISS KATHERINE CHRIST
Secretary . . . . .	JOAN E. MOYER		DR. LEVI GRESH
Treasurer . . . . .	BARBARA A. MILLER		



## *who's who*

Ten seniors receive recognition in 1952-53 edition of Who's Who Among Students in American Universities and Colleges . . . represents students from approximately six hundred colleges and universities . . . biographies published in annual directory, awarded certificates of recognition, free placement service for members . . . nominated by faculty on basis of scholarship, cooperation and leadership in academic and extra-curricular activities, citizenship and service to the school, and promise of future usefulness . . .

STANLEY ADAMS  
SALLY SMOKER BENTZ  
CATHLEEN B. CLYMER  
CARL J. DAEUFER  
ADAM HORN, JR.  
DORIS RUTH JASINSKI  
MILDRED G. LAUTERBACH  
LEONARD J. McCULLOUGH  
BARBARA J. MILLER  
ROBERT L. OWEN  
GLENN C. SLIVINSKE  
DORIS PAS YOTIS



College newspaper published tri-weekly . . . offers constructive work in every field of journalism . . . busy reporters gather news about campus activities and personalities . . . member of Columbia Scholastic Press Association . . . last-minute head writing, proofreading, and page make-up . . .

Co-Editors .....	HARRIET LILLY	Boys' Sports Editor .....	ADDISON PLANZ
	CONNIE ZIMMERMAN	Girls' Sports Editor .....	SHIRLEY KUTZ
News Editor .....	AUDREY SCAGNELLI	Student Adviser .....	JANET KONHAUS
Feature Editor .....	MARGARET DOLAN	Faculty Advisers .....	
Art Editor .....	STANLEY WOLLOCK		DR. HOLLAND BOYD
			DR. A. MERVIN TYSON



*keystone*

# keystonia



Off-set printing continued . . . informality the rule . . . budget a major problem . . . scouting for advertisements . . . well-worn path to the Kutztown Publishing Company . . . deadlines to meet . . . more headaches in layout . . . a sigh of pride and relief as the finished product is distributed . . . a well-fought struggle won!!! . . . Published annually by a staff, representative of each class . . .

Managing Editor . . . . . NANCY A. KLOPP  
Business Manager .. ANNA LOUISE EBERTS  
Secretary . . . . . JEAN KURTYKA

Advisers . . . . .  
DR. HOLLAND BOYD  
MR. HAROLD C. MANTZ  
MR. J. ALLEN PAWLING



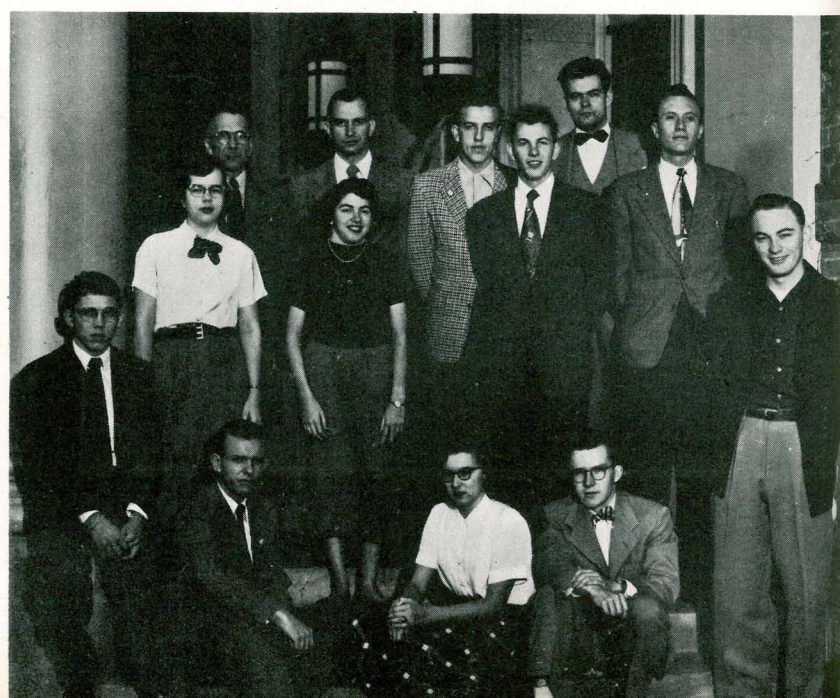


## *geography club*

Prospective geography teachers seeking common interests . . .  
field trip to Brandywine Valley Conservation, lecture on Mexico by  
Miss Kutz . . . Christmas party . . . project of the year mapping of  
Kutztown . . . club dinner concludes the season . . .

President . . . . . LEONARD McCULLOUGH  
Vice-President . . . . . GEORGE SEIDEL

Secretary-Treasurer . . . . . GLADYS MERKEL  
Adviser . . . . . MISS JOSEPHINE MOYER





## *radio forum*

Those interested in dramatics and script writing members . . . informal discussions on W.K.A.P. Allentown . . . radio plays on air . . . guest speakers on program planning and advertising . . .

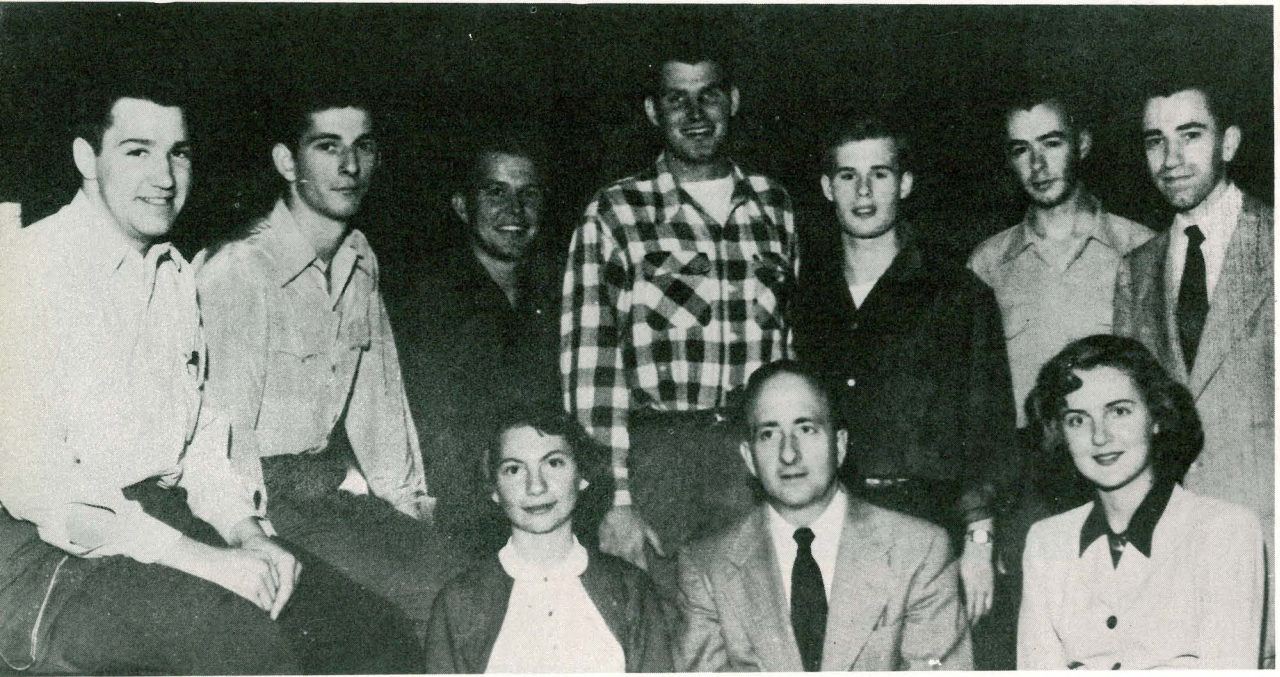
President . . . . . PAUL GARRISON      Secretary . . . . . PATRICIA JENKS  
 Vice-President . . . . . DAVID SMITH

## *contemporary affairs forum*

Discuss major issues of day . . . encourages thorough participation and active interest in student government and local, state, and national government . . . acquaints members with correct parliamentary procedure . . . gives members broad understanding of social, political, and economic problems confronting modern world . . .

Co-Chairmen . . . . .  
                   LENARD McCULLOUGH  
                   DAVID MITCHELL

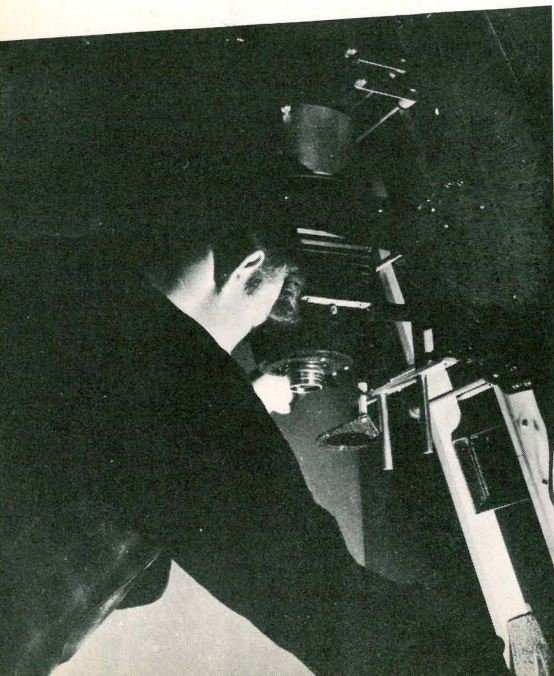
Secretary . . . . . MYRTLE LENTZ  
 Treasurer . . . . . PAUL RHOADS  
 Adviser . . . . . DR. LEVI GRESH



For students interested in photography . . . start beginners in art of photography . . . elements of photography dealt with . . . develop film, prints . . . touch techniques of group picture taking and portraits . . . lend helping hand to yearbook and newspaper . . . exhibition showing progress of individual participants during the year . . .

President ..... STANLEY ADAMS    Adviser ..... MR. AMOS SHARPE  
Secretary ..... STEWARD PORTER

*camera club*





## *fellowcrafters*

For non-art students . . . crafts in weaving, leather, wood . . . fall outing at Mr. Lehman's with a cook-out and square dancing . . . no art jury . . .

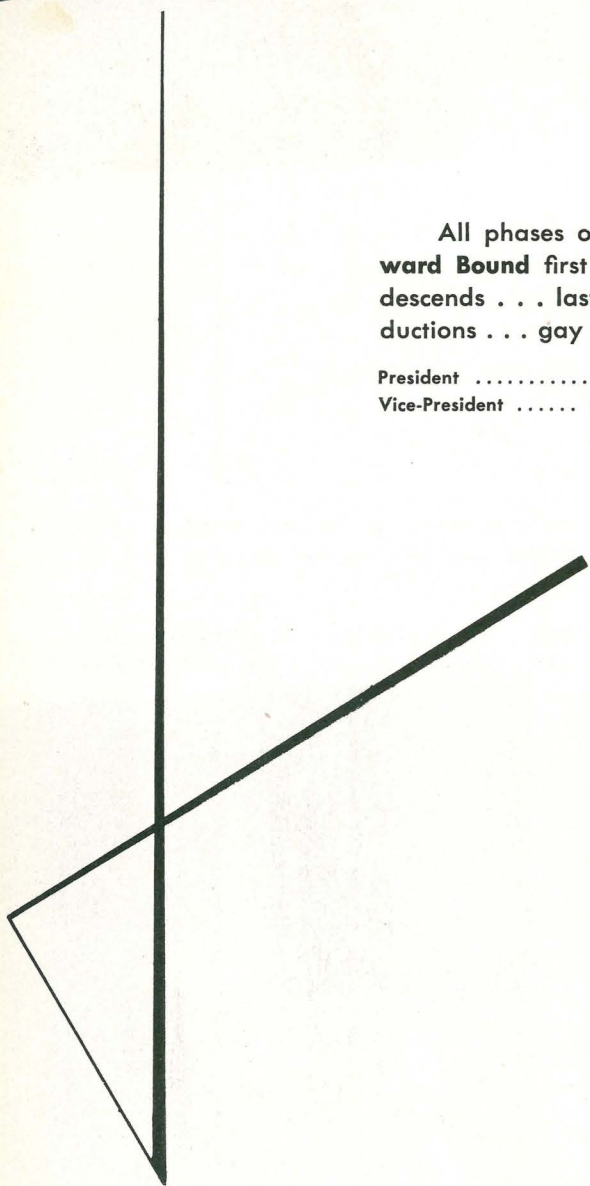
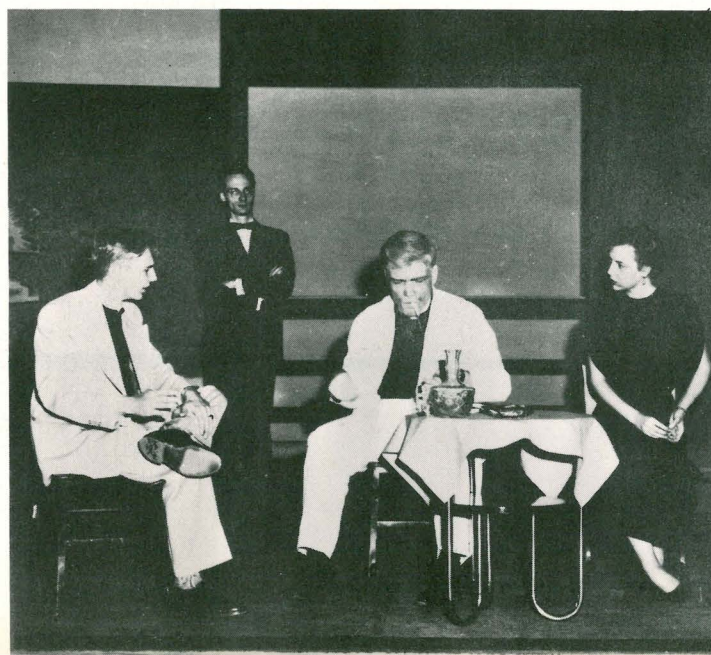
President . . . . .	ELAINE KEHL	Secretary-Treasurer .	KATHRYN MACKENZIE
Vice-President . . . . .	MARILYN MENGLE	Adviser . . . . .	MR. DAVID LEHMAN



## *modern drama*

All phases of dramatics—acting, lighting, set, make-up . . . **Outward Bound** first major production . . . sighs of relief as last curtain descends . . . last-minute details to be settled . . . review current productions . . . gay times at picnic . . . sponsors a tea.

President ..... JAMES FAIRFUL      Secretary ..... NANCY FRYER  
 Vice-President ..... CONNIE ZIMMERMAN      Adviser ..... MISS RUTH BONNER







Members selected on basis of tryouts—combination of the modern dance and of classic ballet . . . develops grace and poise . . . strains of **pat de chat**, **point** come from the practice room every Wednesday . . . trip to the Ballet Russe in Philadelphia thrilled all . . . aches and pains from untrained muscles . . . last-minute rehearsals for the big performance, May Day . . .

President ..... SALLY SMOKER      Adviser ..... MISS EVA PLETSCH  
Secretary ..... MARGARET DOLAN

*concert dance*



## *service club*

Usher . . . sell tickets . . . care for cloakroom during evening performances and assemblies . . . open to all students . . . meets third Monday of month . . .

President . . . . . KAY MACKENZIE      Secretary . . . . . GAYLE MENDENHALL  
Vice-President . . . . . PATRICIA GROFT



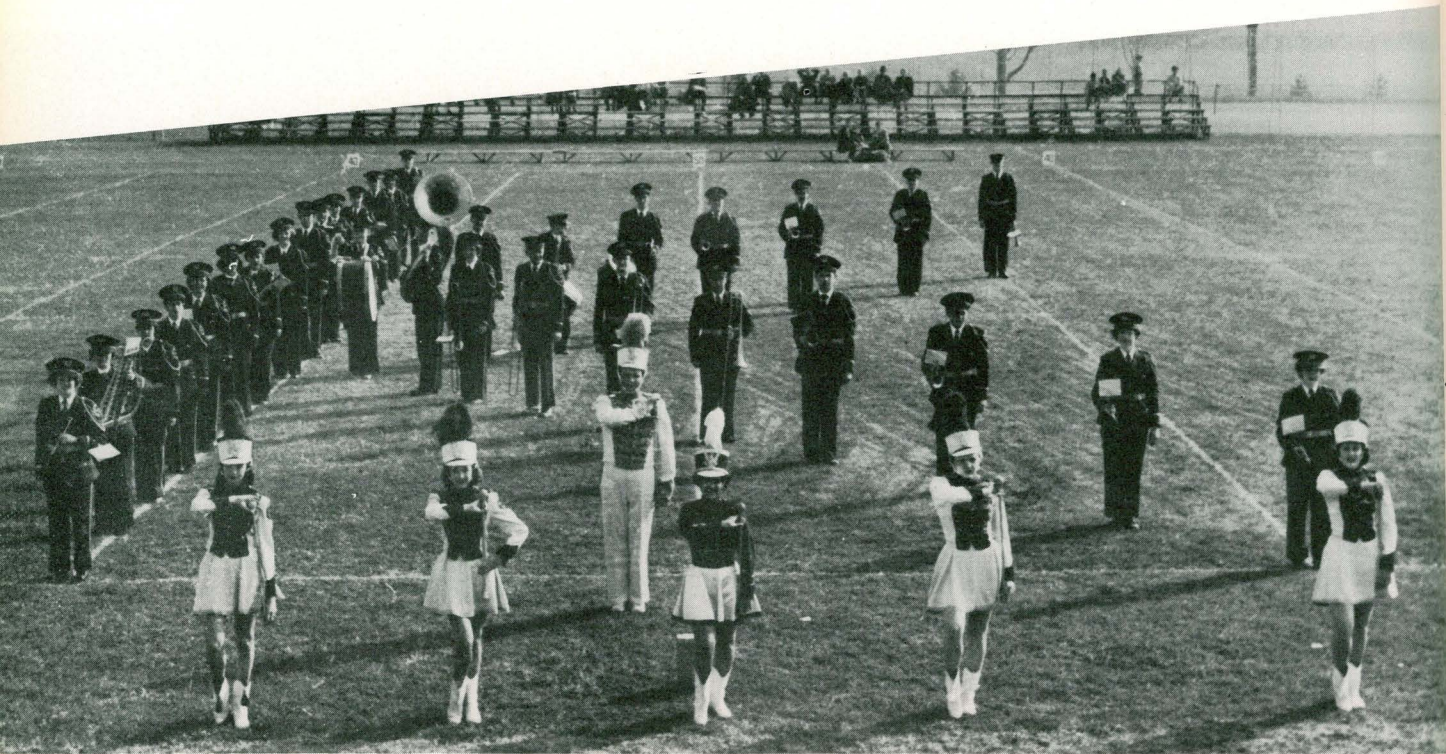


## *choir*

Motto—"Sing, Brother, Sing" . . . musical talent and interest prerequisites . . . members selected by audition . . . candle light procession and presentation of Handel's **Messiah** emphasized Christmas spirit . . . trip to Robesonia to do repeat performance of the **Messiah** . . . participated in festival at Drexel Institute of Technology . . . spring concert during Music Week . . . music for Baccalaureate . . .

President ..... JOSEPH LAMBERT      Secretary ..... JACQUELINE BARNES  
 Vice-President ..... FOREST GAUBY      Adviser ..... MR. HENRY CASSELBERRY





## *band*

Add spark and vigor to football games . . . contribute moral support to Golden Avalanche . . . gave cheerful note to pep rallies as well as reverence to Christmas program . . . participated in Reading's Annual Christmas Parade . . . May Day concluded activities . . .

President . . . . . WILLIAM WOLF      Secretary . . . . . RICHARD JONES  
Vice-President . . . . . RANDALL ROY      Adviser . . . . . MR. ROY THOMAS



# *orchestra*

One of few orchestras in non-music colleges . . . highlight performance at Christmas . . . accompanied choir for Handel's "Messiah" . . . active orchestra ensemble . . . played for special dinners, including Art Conference, Berks Alumni, and President's dinners . . .

President ..... ELMER BERGMAN    Adviser ..... MR. ROY THOMAS  
Vice-President ..... JOSEPH VILLIANO





## *council of religious org.*

The president and one representative of each religious organization plus one representative each from the Men's and Women's Commuting League members . . . clearing house for all campus religious organizations . . . sponsored W.S.S.F. Drive . . . provide films . . . presented Thanksgiving program with Dr. Rollo A. Tallcott . . . strive to promote understanding . . .

President . . . . . HELEN STONER  
 Vice-President . . . . . SHIRLEY FEICK  
 Secretary . . . . . ANNA LOUISE EBERTS

Treasurer . . . . . ROBERT BLEFKO  
 Adviser . . . . . MRS. MARY ELLEN LEWIS



## *christian association*

Conducts weekly devotional services open to all denominational groups . . . conducts Freshman Week activities, bonfire, all-college mixer, picnic at the park . . . sponsors Big-Little Sister program . . . a Christmas gift for Topton Orphanage . . . special weekly Lenten services . . . and many other campus activities.

President . . . . . JAMES FAIRFULL  
 Vice-President . . . . . JACQUELINE BARNES  
 Secretary . . . . . HARRIET LILLY

Treasurer . . . . . DONALD GERHART  
 Adviser . . . . . MRS. MARY ELLEN LEWIS





## *bible study*

Non-sectarian group . . . meets weekly . . . attendance voluntary  
 . . . open to college students who wish to study Bible . . . members plan  
 programs and participate in them . . . Christmas dinner in Georgian  
 Dining Room . . .

President ..... BETTY FERRIS  
 Vice-President ..... HARRIET LILLY  
 Secretary-Treasurer ... BARBARA SCHLEGEL

Advisers .....  
 REV. RALPH BARNMAN  
 MR. J. ALLEN PAWLING



## *canterbury club*

Organization of Episcopalian students . . . panel discussions . . .  
speakers . . . films . . . attended Christ Church as a group in Reading  
. . . joint party with Canterbury members of Albright and Kutztown at  
Christ Church . . .

President . . . . . PEGGY PISPEKY  
Vice-President . . . . . AUDREY WOLFINGER  
Secretary-Treasurer . . . . . JOAN BEIDLER

Advisers . . . . .  
DR. GRACE R. HESSE  
REV. W. PAUL THOMPSON



## *lutheran students association*

Bi-weekly meetings . . . work toward common goal . . . better Christian fellowship . . . films and slides, visiting speakers . . . participated in area and district conferences . . . Christmas dinner and party lent social note . . .

President . . . . . ROBERT BLEFKO      Secretary . . . . . CAROLINE HORN  
Vice-President . . . . . LOUISE FREDERICK      Adviser . . . . . MR. ROY W. HAMME





## *hillel youth group*

Organization of Jewish students on campus . . . working to become affiliated with the National Hillel Foundation . . . represented on Council of Religious Organizations . . . Lenten worship service under Rabbi Sidney Regner . . .



## *newman club*

National organization of Catholic students . . . review of the film, "Government Is Your Business" . . . discuss problems of their Faith . . . choir sings for Sunday Masses . . . entertainment galore at parties . . . friendly relationship of members encouraged by meetings and social functions . . .

President ..... JOSEPH BUGGY  
 Vice-President ..... PAUL BUGAY  
 Secretary ..... BARBARA RUH  
 Treasurer ..... ROBERT WOLFF

Representative to the Council  
 JOHN ZAJAC  
 Advisers .....  
 REV. FRANCIS P. ADOLPH  
 MR. JOSEPH H. PATTON



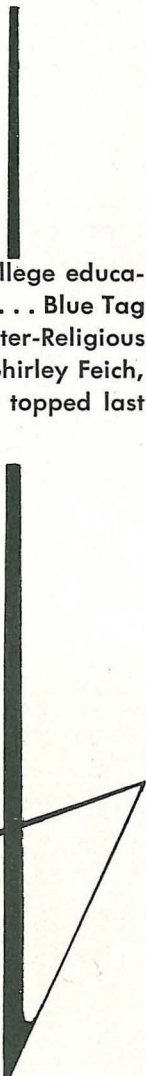
*united student fellowship*

Members of Reformed and Congregational churches . . . sponsored  
All-College Party in October . . . sent package to Ecaterini . . . held  
Thanksgiving service . . .

President .....	SHIRLEY FEICK	Advisers .....	
Vice-President .....	PATRICIA NAYLOR		REV. PAUL SCHMOYER
Secretary-Treasurer .....	JEAN BURNS		DR. ITALO deFRANCESCO

*w s s f*

WSSF—an annual drive helping to make possible a college educa-  
tion for foreign students . . . this year's projects: . . . carnival . . . Blue Tag  
Day . . . auction in dining room . . . drive sponsored by Inter-Religious  
Council, committee consisting of Harry Meinzer, Chairman, Shirley Feich,  
Carolyn Horn, Robert Blefko, and Elaine Kehl . . . \$315.00 topped last  
year's record . . .





# college capers



