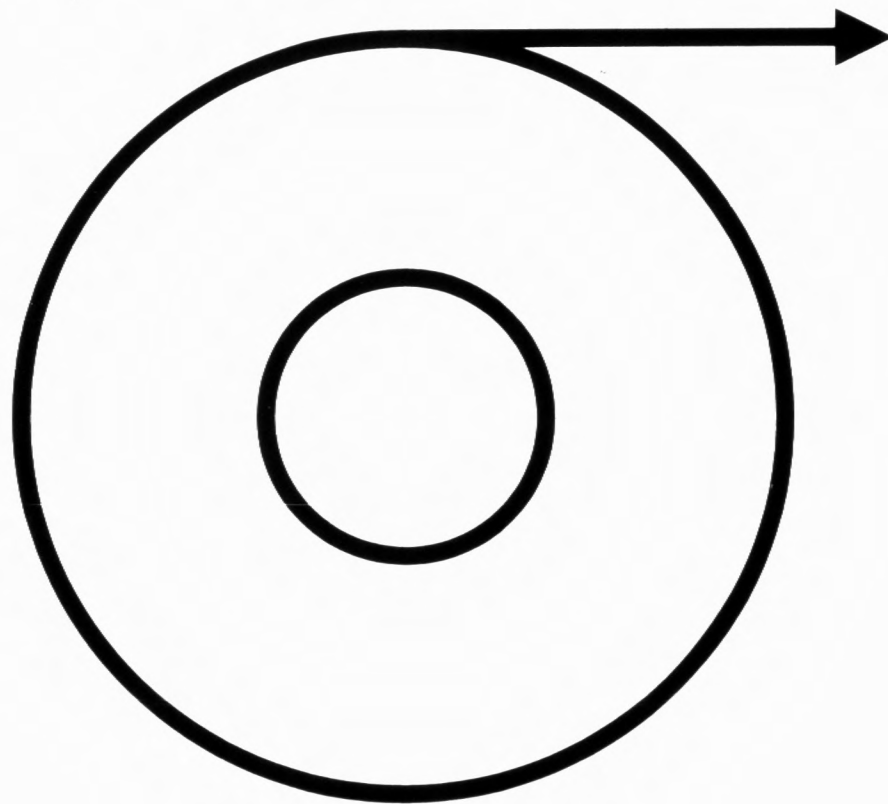


THE NATIONAL ARCHIVES



START OF REEL

2.5 mm
ABCDEFGHIJKLMNOPQRSTUVWXYZ
abcdefghijklmnopqrstuvwxyz
1234567890

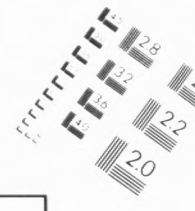
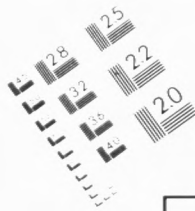
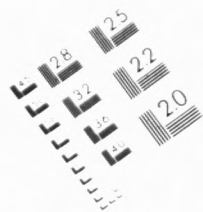
2.5 mm

2.0 mm

ABCDEFGHIJKLMNOPQRSTUVWXYZ
abcdefghijklmnopqrstuvwxyz1234567890

1.5 mm

ABCDEFGHIJKLMNOPQRSTUVWXYZ
abcdefghijklmnopqrstuvwxyz1234567890



PM-MGP METRIC GENERAL PURPOSE TARGET PHOTOGRAPHIC



PRECISIONSM RESOLUTION TARGETS

1.0 1.1 1.25 1.4 1.6 1.8 2.0 2.2 2.5 2.8 3.2 3.6 4.0

1.0 mm 1.5 mm 2.0 mm 2.5 mm

ABCDEFGHIJKLMNOPQRSTUVWXYZ
abcdefghijklmnopqrstuvwxyz1234567890

ABCDEFGHIJKLMNOPQRSTUVWXYZ
abcdefghijklmnopqrstuvwxyz1234567890

ABCDEFGHIJKLMNOPQRSTUVWXYZ
abcdefghijklmnopqrstuvwxyz1234567890

A5

A4

A3

PRECISIONSM RESOLUTION TARGETS

THE NATIONAL ARCHIVES
RECORD COPYING DEPARTMENT

4.5 mm
ABCDEFGHIJKLMNOPQRSTUVWXYZ
abcdefghijklmnopqrstuvwxyz
1234567890

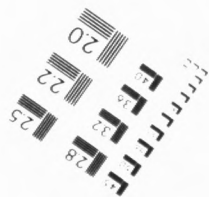
4.5 mm

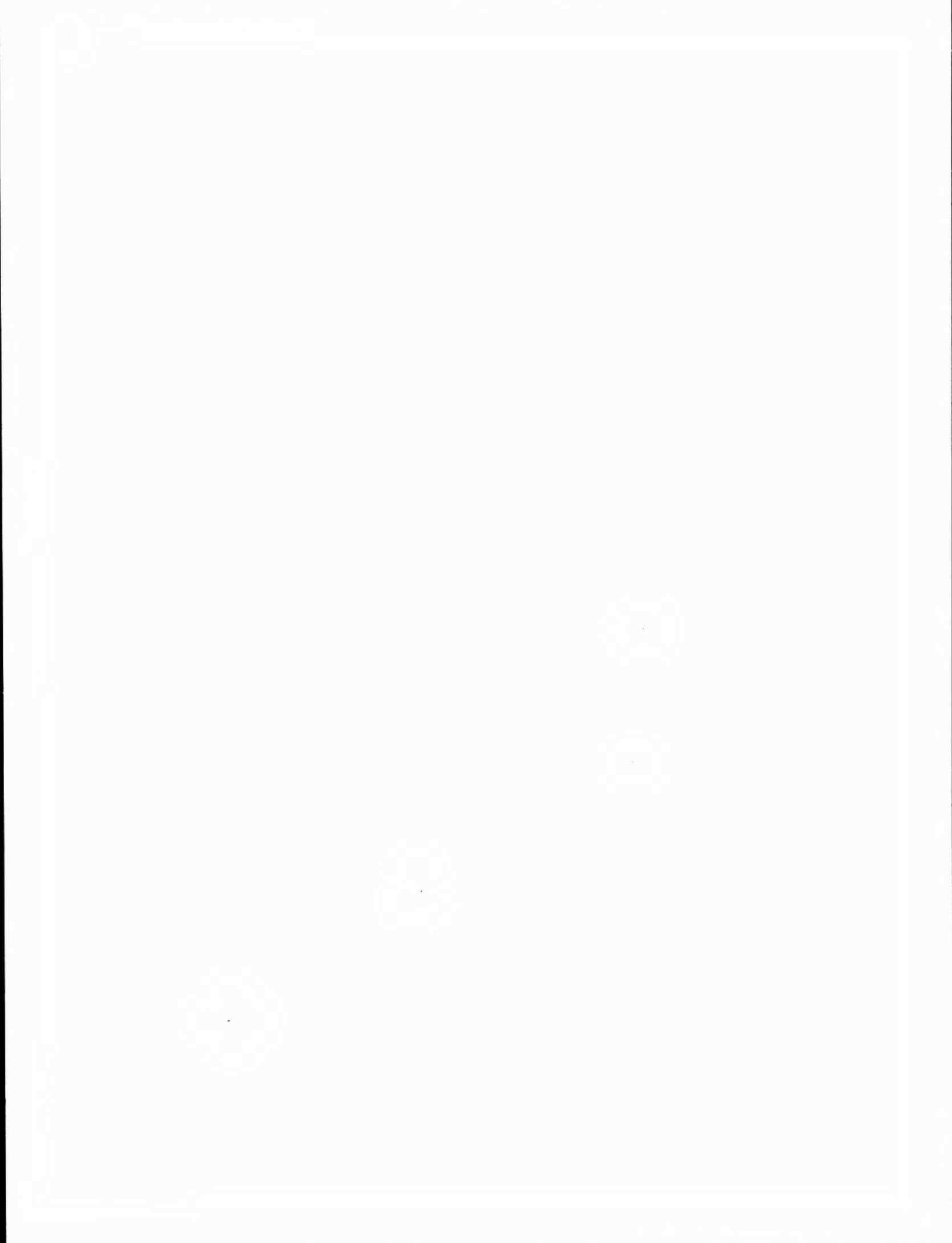
3.5 mm

3.5 mm
ABCDEFGHIJKLMNOPQRSTUVWXYZ
abcdefghijklmnopqrstuvwxyz1234567890

3.0 mm

3.0 mm
ABCDEFGHIJKLMNOPQRSTUVWXYZ
abcdefghijklmnopqrstuvwxyz1234567890





KODAK Gray Scale

C ● M

**THE NATIONAL
ARCHIVES**

**SOME PAGES OF THIS
DOCUMENT ARE
BLANK AND HAVE NOT
BEEN FILMED**

THE NATIONAL ARCHIVES

**THIS VOLUME HAS VERY
TIGHT BINDING AND WHILE
EVERY EFFORT HAS BEEN
MADE TO REPRODUCE THE
CENTRES, FORCE WOULD
RESULT IN DAMAGE.**

**THE NATIONAL
ARCHIVES**

**THE BEST POSSIBLE
REPRODUCTION HAS
BEEN OBTAINED FROM
THIS
DOCUMENT**

DOCUMENT
SIZE

31.5 X 47.5 cms.